

# POWERING THE COMPLETE SOLUTION VIRTUAL DESKTOPS



Zero Clients, Thin Clients, ESX Hosts, Management Software, Blade Workstations and the Services to Make it Work

Virtual Desktop Infrastructure (VDI) is changing the landscape of enterprise computing. The VDI benefits of slashing operating, management and capital expenses associated with end-user computing has led to explosive growth in the number of proof of concept trials.

ClearCube has developed and maintained a Technology Alliance Partnership with VMware for several years that has been the basis for industry leading, fully integrated, VDI solutions development and best practices.

At the core of the ClearCube and VMware VDI solution is the PCoIP remoting protocol which seamlessly connects the ClearCube Zero Clients to the VMware View Virtual Machines or to ClearCube Blade Workstations. ClearCube maintains the largest installed base of PCoIP solutions and has accomplished this by manufacturing state-of-the-art PCoIP Zero Clients. ClearCube Zero Clients have a small footprint, require very low power (Max of 15 watts), generate very little heat, are quiet and are very low maintenance. When deploying to Task or Knowledge Users, ClearCube PCoIP Zero Clients connect to VMware View Virtual Machines. The very same ClearCube PCoIP Zero Client can also connect to a ClearCube Blade Workstation on a one-to-one basis for high performance computing required of Power Users. The option of deploying the same client for all types of users not only reduces the total cost of ownership but also dramatically simplifies the overall environment.

While VDI is an exceptional computing solution for Task and Knowledge workers that require less computing power and limited multimedia needs while maintaining a standard application profile, it doesn't always meet the needs of all end-users in the enterprise. For supporting Power Users that often require graphic intensive applications or applications that don't perform well in a virtualized environment, you can realize the management and energy efficiencies of VDI and utilize a common data center architecture by deploying ClearCube PCoIP Blade Workstations and delivering a one-to-one connection.

VMware View provides the common connection brokering for the PCoIP connection to the VMware Virtual Machine as well as the PCoIP connection to the ClearCube Blade Workstation. This seamless integration delivers a holistic environment that improves the end-user experience, ease of management and delivers a more rapid Return-on-Investment (ROI).



## ClearCube Offers the Greatest Breadth of VMware Ready PCoIP Clients



19424 PCoIP  
Zero Client with  
SmartCard Reader



19440 PCoIP Zero Client



19422 PCoIP  
Zero Client



C7424 PCoIP  
Digital Fiber  
Zero Client with  
SmartCard Reader



I8520 Atom  
Thin Client



C7422 PCoIP  
Digital Fiber  
Zero Client

ClearCube Technology  
[www.clearcube.com](http://www.clearcube.com)  
1-866-652-3500

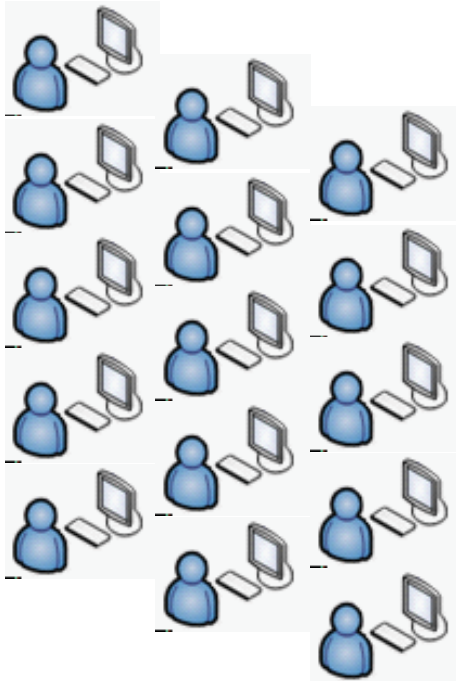
## Configuring a Complete Centralized Computing Environment in a Common Framework

With ClearCube and VMware, Task, Knowledge and Power Users have a wide range of options for configuring a solution to meet their exacting needs. To fulfill their video requirements, VMware View Virtual Machines can support single, dual or quad monitors and ClearCube Blade Workstations can support single, dual or quad monitor configurations with both being deployed from the same rack in the data center.

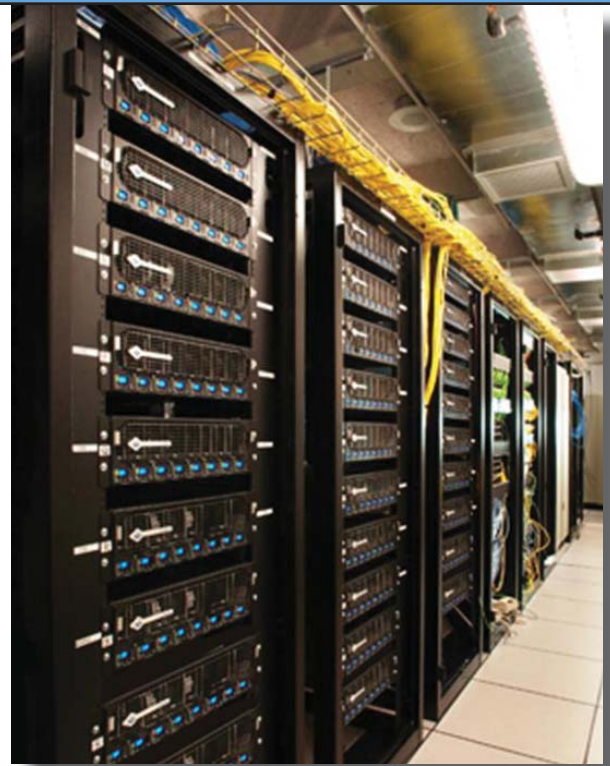
### End Point Management and Computing Security

The final component to complete the centralized computing environment is ClearCube's Sentral Management Software. Sentral provides a simple way to deploy patches, update PCoIP firmware, track and manage the assets and control all the end points within your environment. Sentral also enables policies that control processes, applications and storage access which mitigates most security risks associated with deploying virtual machines.

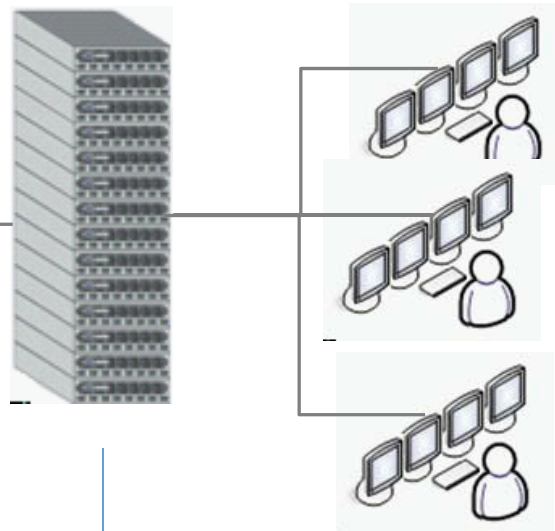
### ClearCube Simplifies VDI Deployments, Supports ALL Types of Users and Delivers a Faster ROI



**Task & Knowledge Users connecting to Virtual Machines via a ClearCube VMware Ready Zero Client Hosted on a ClearCube ESX Server**



**ClearCube ESX Certified Servers and One-to-One Blade Workstations**



**Power Users connecting to a ClearCube PCoIP Blade Workstation Supporting Quad Monitors and High Definition Graphics**